

# OPS UNIFORM DESIGN

**SCHOOL UNIFORM GIRLS FS - YEAR 2**



**BLOUSE FRONT**



**BLOUSE BACK**



**PINAFORE FRONT**



**PINAFORE BACK**



© 2024 Oaktree Primary School



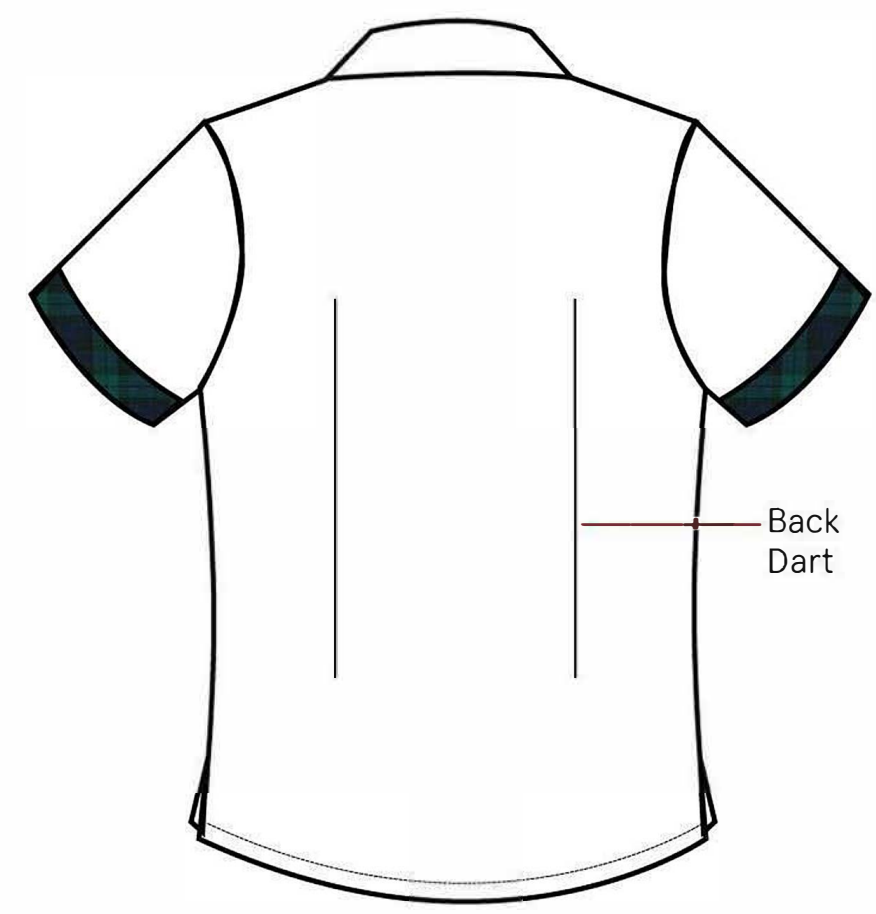
**SCHOOL UNIFORM GIRLS YEAR 3-6**



**BLOUSE FRONT**



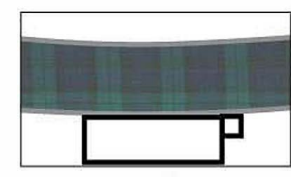
**BLOUSE BACK**



**DIVIDER SKIRT FRONT**



**DIVIDER SKIRT BACK**



**Divider skirt Inner View**

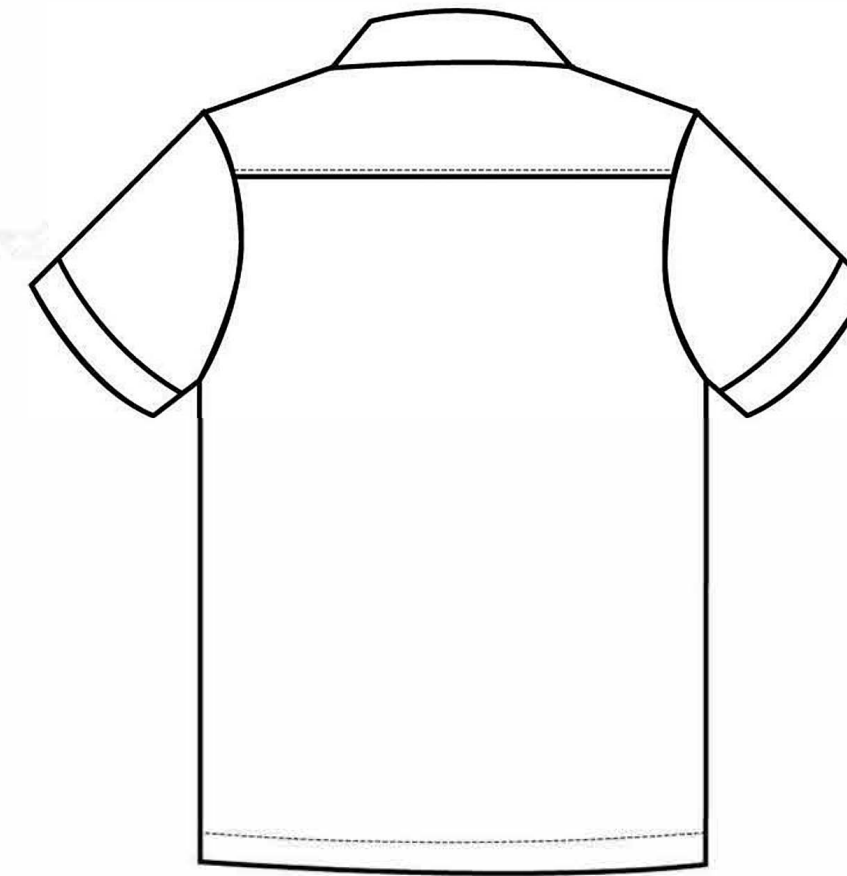




SHIRT FRONT



SHIRT BACK



SHORTS FRONT



SHORTS BACK

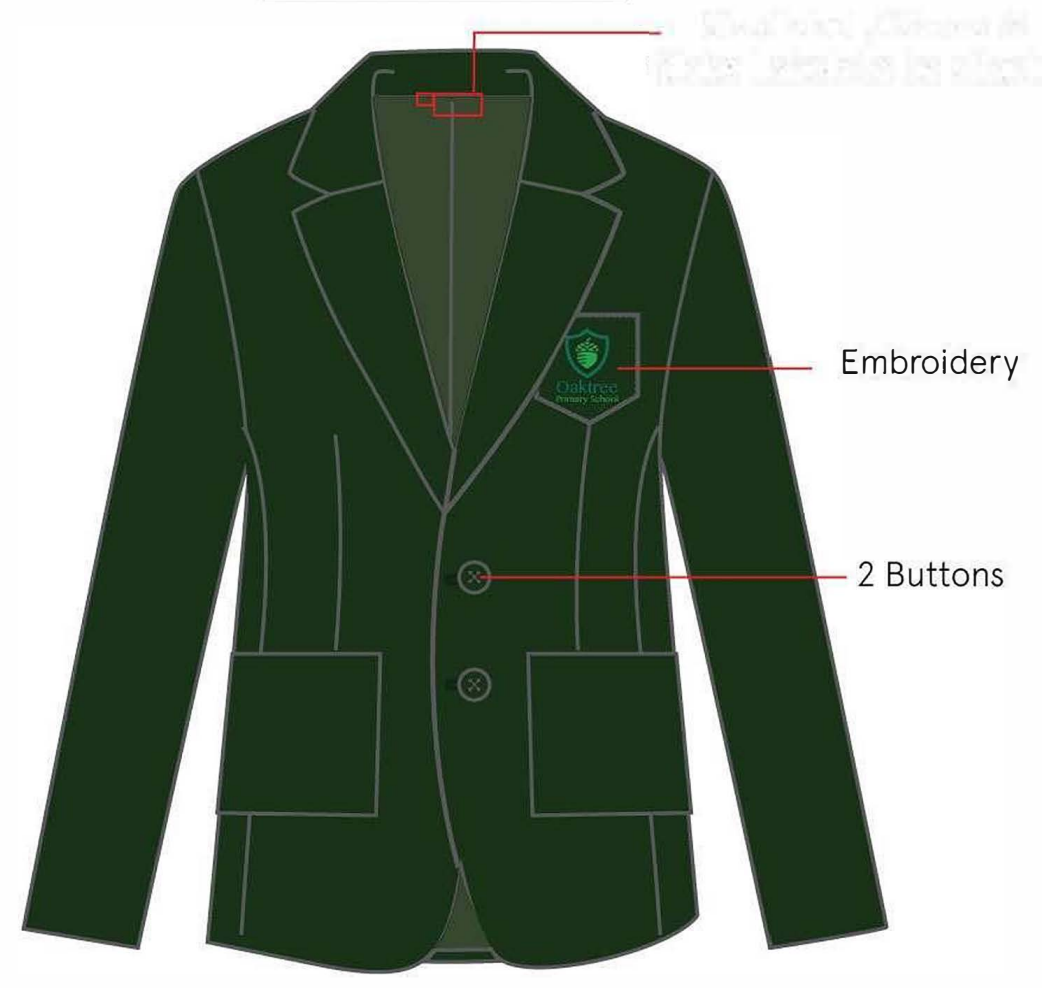


SHIRT FRONT





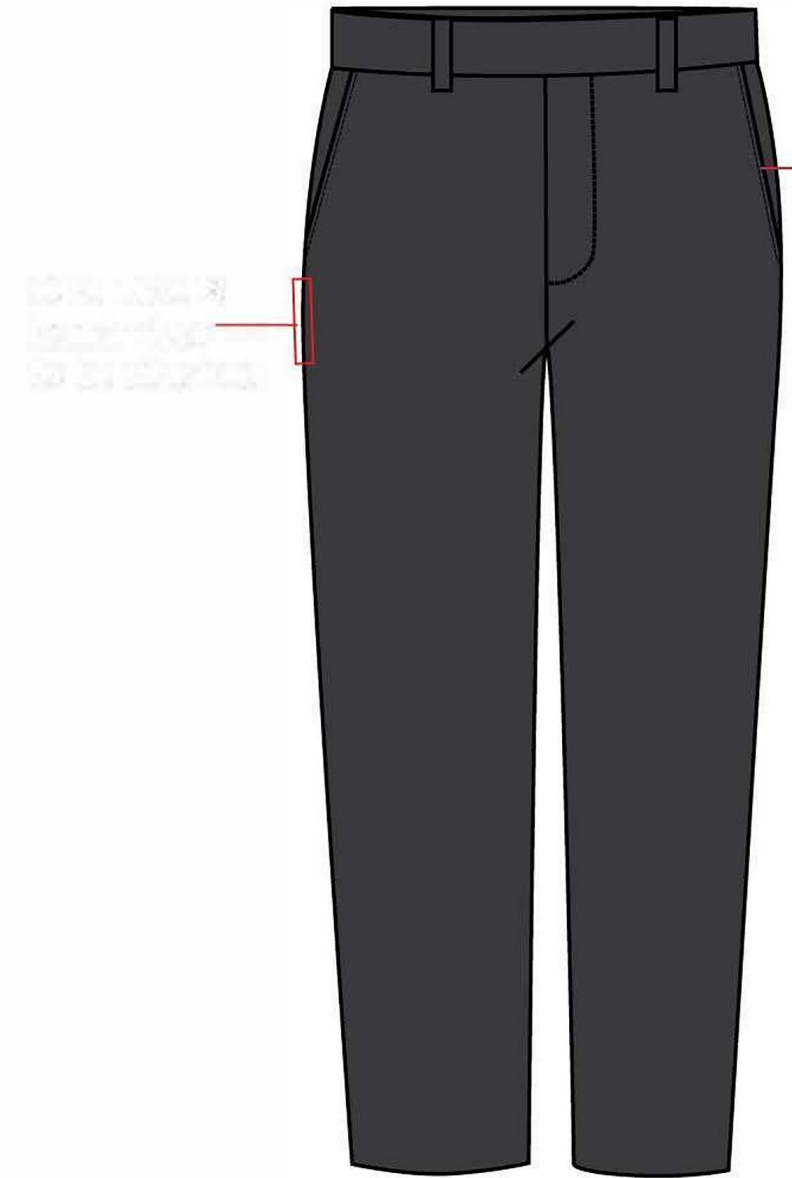
**BLAZER FRONT**



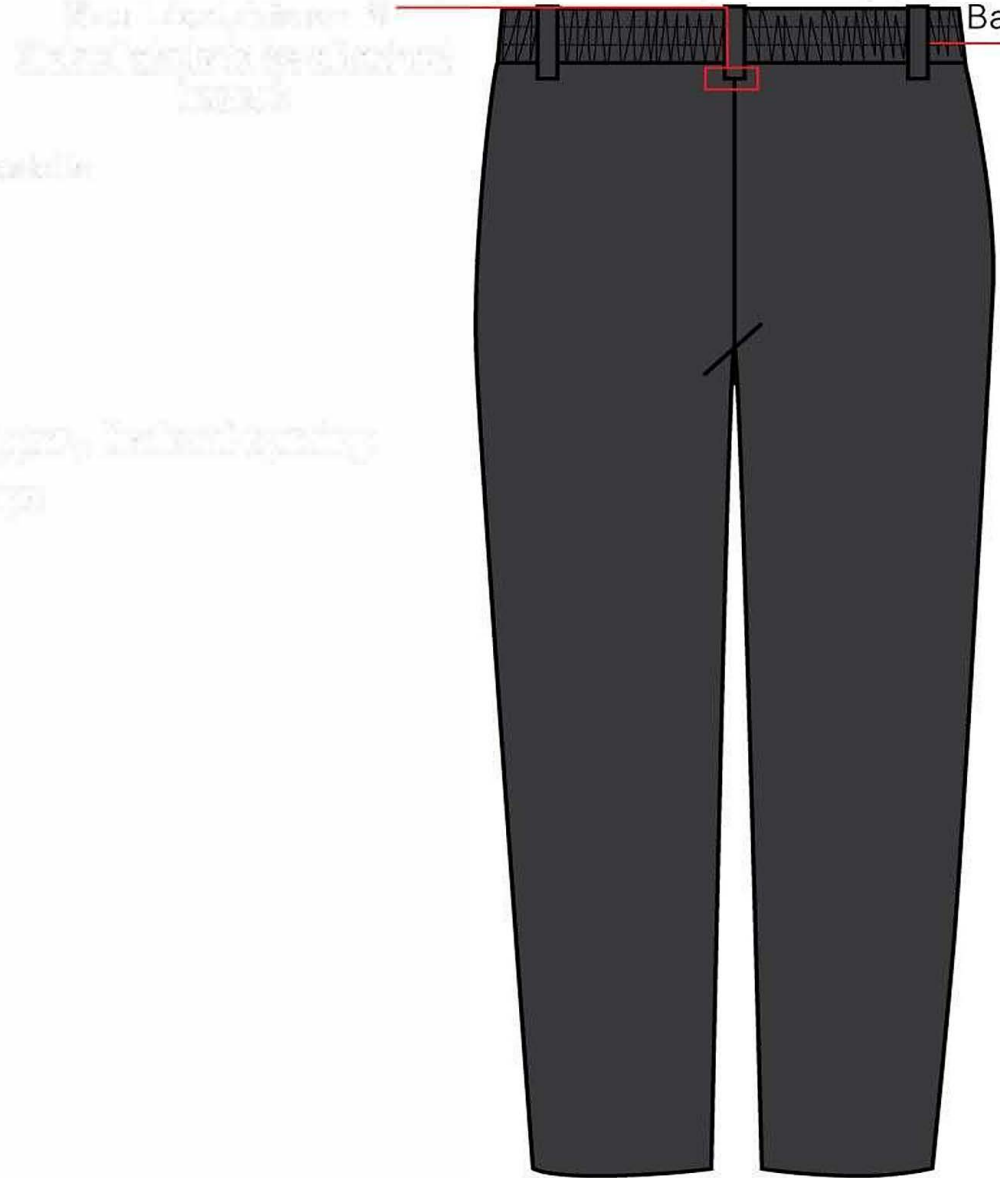
**BLAZER BACK**



**TROUSERS FRONT**



**TROUSERS BACK**



\* Measurement for the trousers should be taken with the trousers open at the waist

180cm (5ft 7in)



**PE UNIFORM BOYS & GIRLS -ALL GRADES**



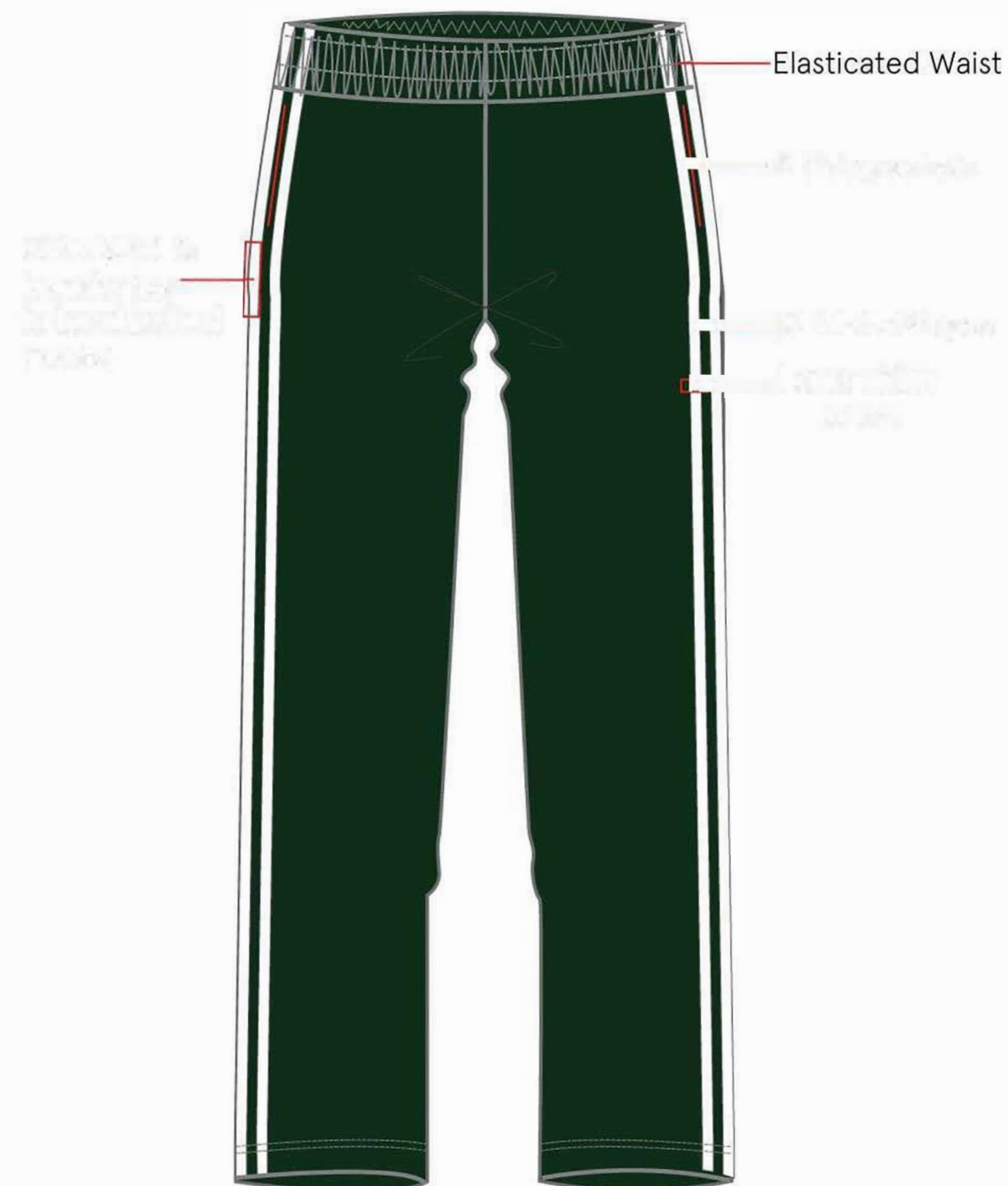
**POLO T SHIRT FRONT**



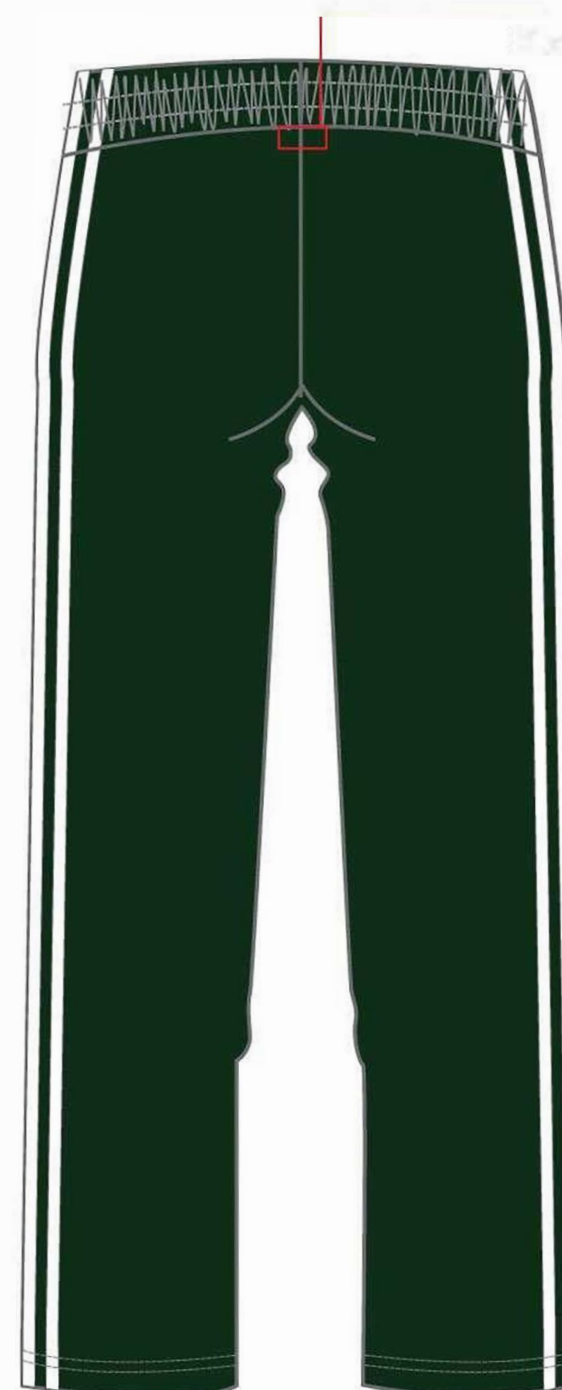
**POLO T SHIRT BACK**



**TRACK PANTS FRONT**



**TRACK PANTS BACK**



<p>1 = Polo T-shirt</p> <p>2 = Track Pants</p>	<p>1 = Polo T-shirt</p> <p>2 = Track Pants</p>
------------------------------------------------	------------------------------------------------



POLO T SHIRT FRONT



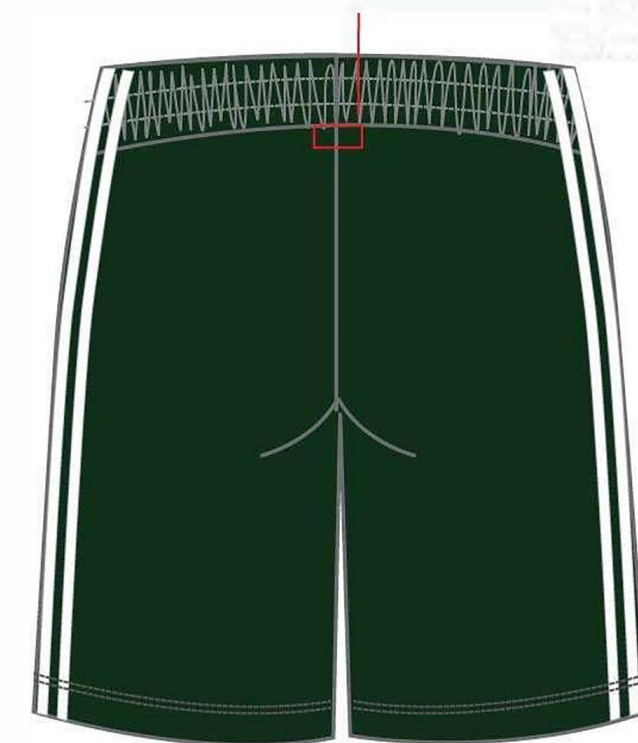
POLO T SHIRT BACK



SHORTS FRONT



SHORTS BACK



Legend

Dark Green

T-Shirt

White

PE Shorts

CARDIGAN FOR GIRLS (OPTIONAL)

FRONT



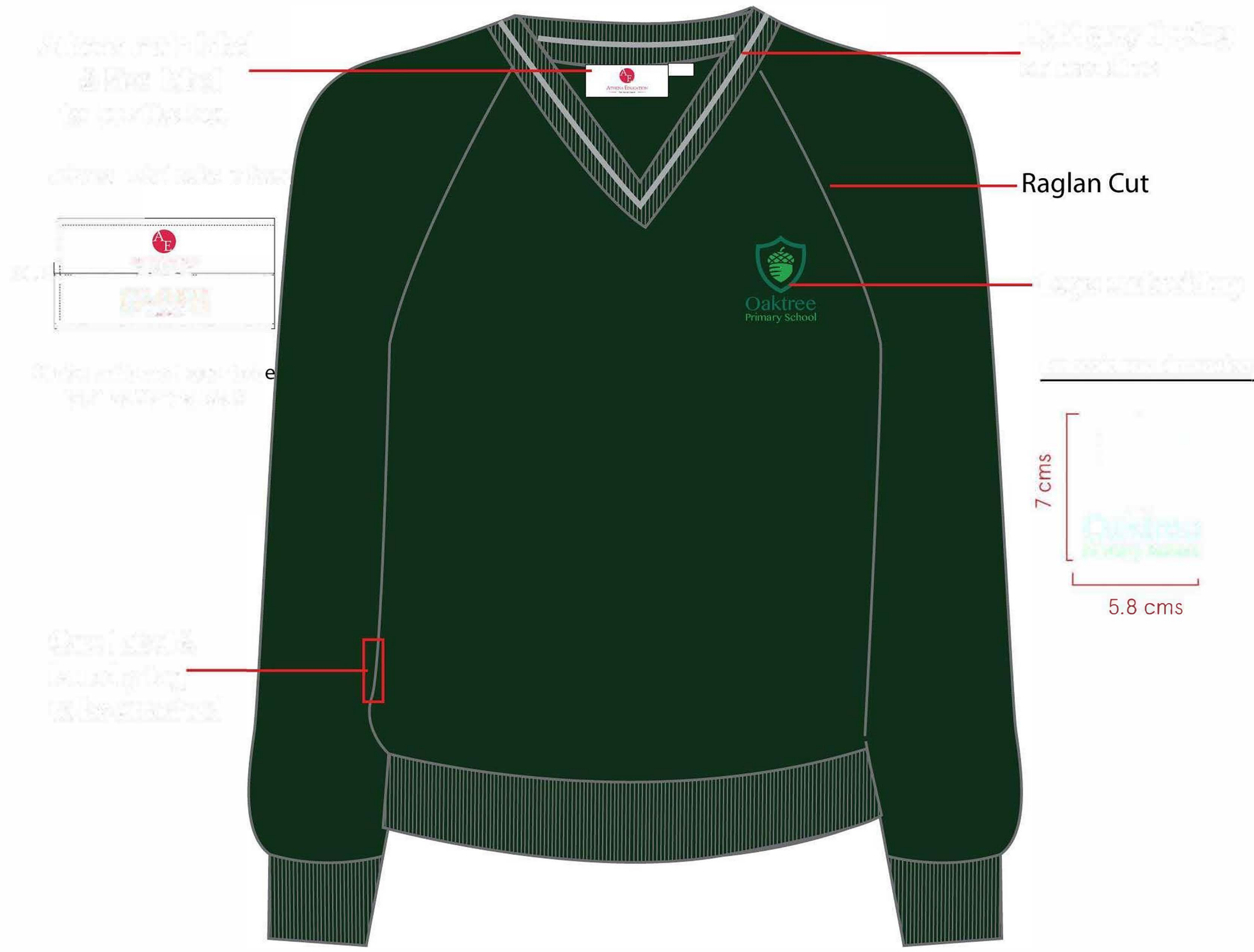
BACK



PULLOVER FOR BOYS (OPTIONAL)

FRONT

BACK



WINTER JACKET

FRONT



BACK

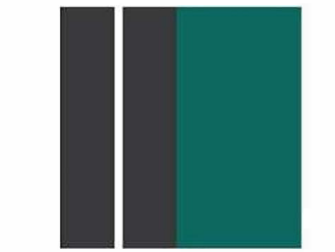


Fabric Details

# Fleece

# Clip on tie (OPTIONAL)

\* STRIPE DIMENSIONS TO BE FOLLOWED

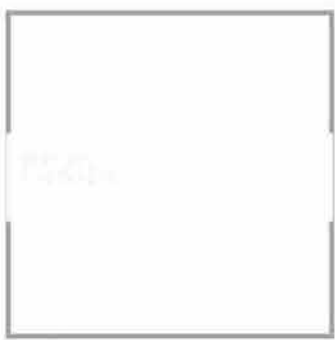


Dark Green  
Dark Grey  
Dark Green

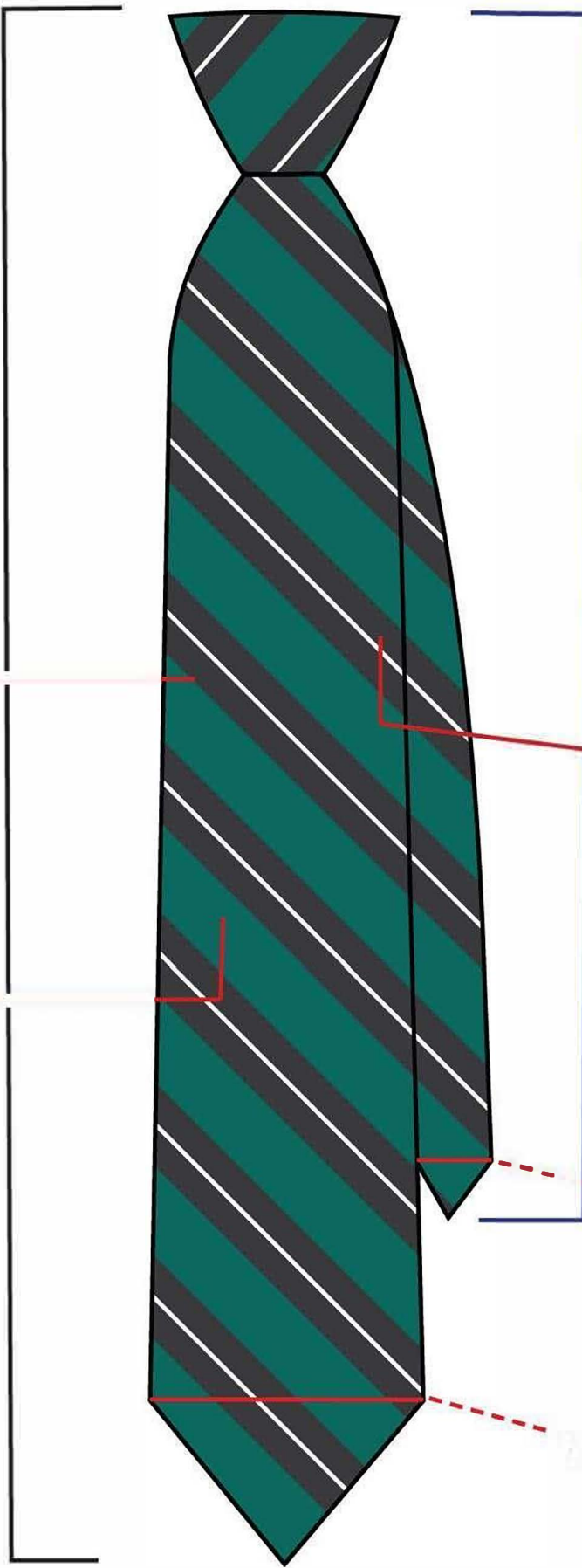
Width of stripe  
Height of stripe

Width of stripe

Height of stripe



Width



THIS IS NOT TO BE USED FOR ANY OTHER PURPOSE

